

Decorah to Postville & Ludlow Area 69 kV Transmission Construction Project

QUICK FACTS

Member Co-op(s) Serving: Allamakee-Clayton
Counties: Allamakee, Clayton & Winneshiek
Length: 30 miles **Voltage:** 69 kV
End Points: Nordness Substation to STH 9
STH 9 to STH 51 & Frankville Road
Nordness to Postville Substations

OVERVIEW

Dairyland Power Cooperative (Dairyland), a not-for-profit generation and transmission cooperative headquartered in La Crosse, WI, proposing a project in northeast Iowa. The proposed project consists of rebuilding existing line and new construction of approximately 30 miles of 69kV transmission line; approximately 12 miles of the transmission line would be retired near the Decorah, Waukon and Postville, Iowa area.

The proposed project consists of the following components:

- Rebuild 3.0 miles of 69kV transmission line between the Nordness Substation and Iowa State Highway (SH) 9 southeast of Decorah.
- New build of approximately 11 miles between the intersection of SH-9 and Centennial Road, and the intersection of SH-9 and Old Stage Road to Dairyland's existing Ludlow Substation.
- New build of approximately 6 miles of 69kV transmission line between the intersection of SH-9 and SH-51, and 0.6 mile north of the intersection of Highway 51 and Frankville Road.
- Rebuild approximately 9.2 miles of 69kV transmission line that crosses State Highway-51 to its termination point at the Postville Substation.
- Retire approximately 12 miles of existing 69kV transmission line between the Nordness Substation to Postville Substation.

SCHEDULE

IUB Open Houses: Spring 2015
Easements: Winter 2015 - Winter 2017
Construction: Winter 2017 - Spring 2019
Est. In-Service Date: Spring 2019

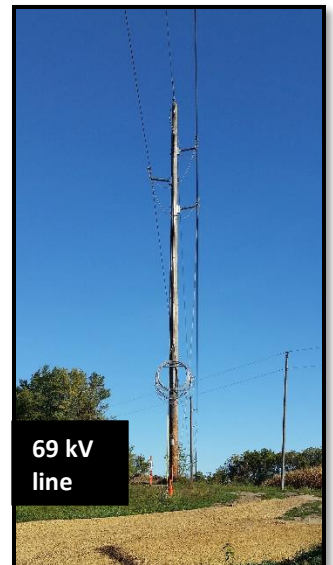
PERMITTING

Dairyland intends to seek financial assistance from the U.S. Department of Agriculture (USDA) Rural Utilities Service (RUS) to build 30 miles of 69 kV transmission line in northeast Iowa. With Dairyland's request for financing assistance from the USDA RUS, the proposed project becomes a federal action subject to review under the National Environmental Policy Act (NEPA).

In addition to the federal environmental assessment, Dairyland will need to acquire state, county and local permits for the construction of the proposed project.

EASEMENTS/TREE REMOVAL

Dairyland Real Estate and Right of Way field agent representative will contact landowners regarding the project. Information will be shared on easements, any tree removal, construction access, and practices and restoration of the right of way.



Project updates and information are available at www.DairylandPower.com or contact:

[Jesse Beckendorf](#), Project Manager
Phone: 608-787-1626

[Jessica Bahr](#), Right-of-Way Field Agent for Winneshiek county
Phone: 608-790-4186

[Rob Maly](#), Right-of Way Field Agent for Allamakee & Clayton counties
Phone: 608-518-2633